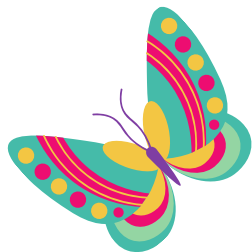




HOORAY IT'S MAY!

May is when it really starts to warm up, flowers start to bloom, and we start to pull out our shorts and tank tops. We celebrate mothers and remember those who have served our country. There are so many activities to explore and enjoy during the warm months of the year, and May is when you really start to feel the excitement in the air.



MOTHER'S DAY

MAY 14



This month we are given an opportunity to celebrate those in our lives who have been mother figures. While we all come into this world with a mother, throughout our lives we occasionally come across others who fill the role of mother as well. Loving and guiding us through life, mothers come in all shapes and forms and Mother's Day is a great time every year to take the opportunity to let them know how much we love and appreciate them. Whether it's a card, flowers, candy, or just a phone call, let's all make sure we take the time to let the mothers in our lives know how much we love them.

WHATS IN SEASON??

Here's a list of some of the items that are in season in the month of May. These items are at their most delicious and fresh at this time of year!



VEGETABLES

Artichokes, arugula, avocado, asparagus, beets, bell peppers, broccoli, cabbage, carrots, celeriac, celery, collard greens, cucumber, endive, fennel, kale, leeks, parsnips, onions, peas, potatoes, spinach, tomatoes, zucchini



FRUITS

Apples, apricots, blackberries, blueberries, cantaloupe, cherries, grapefruit, lemon, lime, mango, oranges, nectarines, peaches, plums, raspberries, strawberries



FLOWERS

Roses, Trillium, Rhododendrons, Lilies of the Valley, Bearded irises, Peonies, Mountain laurels, Lamb's ear, Forget-me-nots, Lilacs



Spring Crossword Puzzle



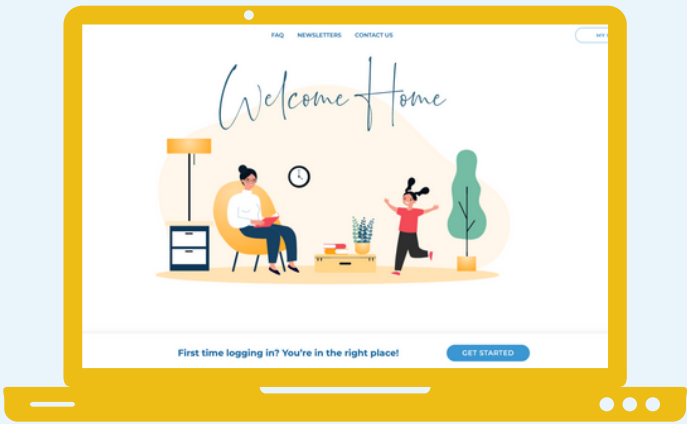
Down

1. This American sports season starts in spring.
3. In spring ___ start chirping again.
5. Shadow may determine when spring starts.
6. Spring flower known for resiliency.
8. Environmental holiday in spring. (2 words no space)
9. You might need this for allergy season.
11. Gentle wind.
12. Marks the start of Spring.
13. March comes in like a ___ and out like a lamb.
14. In spring the leaves turn ___ again.
18. Spring flowers, famous in the Netherlands.

Across

1. A fluffy spring animal.
2. Spring ends in.
4. In spring the days get ___.
7. April showers bring ___ ___. (2 words no space)
10. Spring festival in Washington DC. (3 words no space)
15. This bird is usually a signal of spring (also a superhero)
16. A form of precipitation
17. What causes allergies?
19. Rain___the earth.
20. Greek goddess of Spring.

WWW.SGATHOME.COM



The new website for current tenants has a sleek yet playful design that makes information easier to access. Our FAQ page has been designed with users in mind, there is even a helpful tips section to help guide you through common situations. If you are unable to find the answers to your questions on our website, please use our Contact Us section for specific departmental contact information. We are so excited to have share this new and improved website with our SG Community!

Helpful Tips

Paying bills for the first time?

Need to submit a maintenance request?

Setting up utilities or internet service?

Having trouble? We are here for you! Contact us.

SUPPORT
General property concerns

Email our Property Managers:
support@sgrealestateco.com
Reach us during business hours at:
(800) 794-1240 ext 3

ACCOUNTING
Rent charges, payments, & balance inquiries

Email our Accounting Team:
accounting@sgrealestateco.com
Reach us during business hours at:
(800) 794-1240 ext 5

LEASING
Lease expirations, renewals, & changes

Email our Leasing Agents:
leasing@sgrealestateco.com
Reach us during business hours at:
(800) 794-1240 ext 2